

Technical Procedure

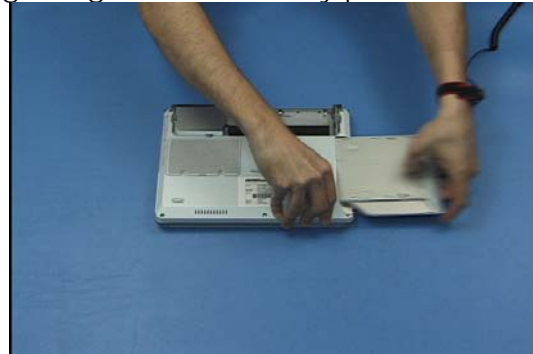
LifeBook P7000 Series Disassembly

This LifeBook is also available in black, so the one you are working on may not be the same color as the model shown here.

Be sure to power off the LifeBook before beginning this disassembly procedure.



1. Turn the unit over and remove the battery.



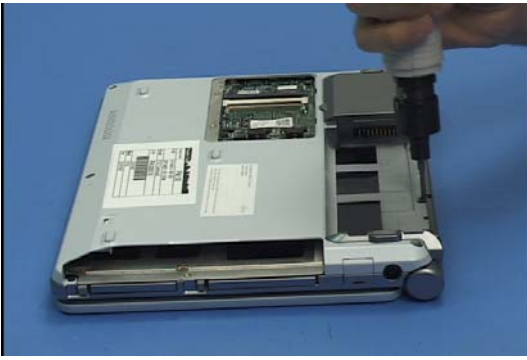
2. Remove the optical drive.



3. Extract 2 screws from the RAM cover and remove it.



4. Remove the RAM by pressing out on the locking clips.



5. Remove all 8 screws from the lower case.



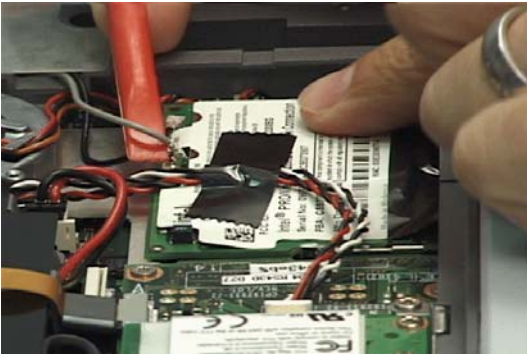
6. Turn the unit over, open the cover and lay it flat.



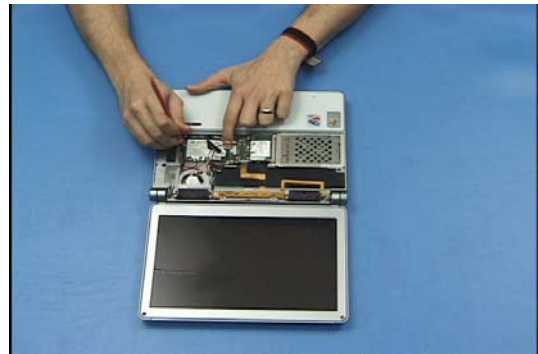
7. Using a plastic screwdriver, pry up and remove the speaker/status LED cover.



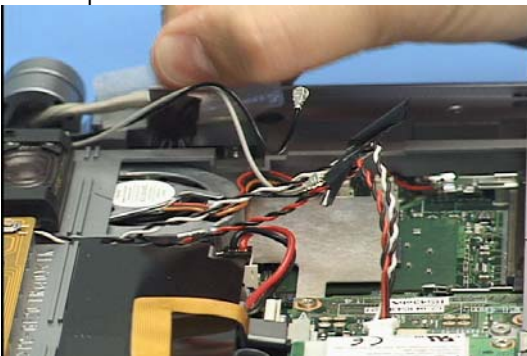
8. Tilt up the keyboard, slide it forward to release it, disconnect its cable and remove it.



9. Disconnect the 2 antenna cables from the WLAN card, disconnect the speaker cable and un-tape it from the top of the card.



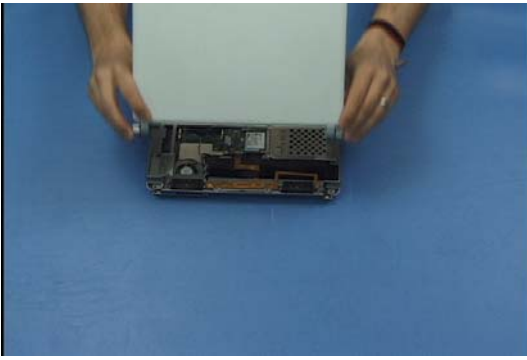
10. Remove the WLAN card by pressing outward on the locking clips.



11. Lift up the adhesive backed wire guide, disconnect the display cable and free it and the antenna cables from underneath.



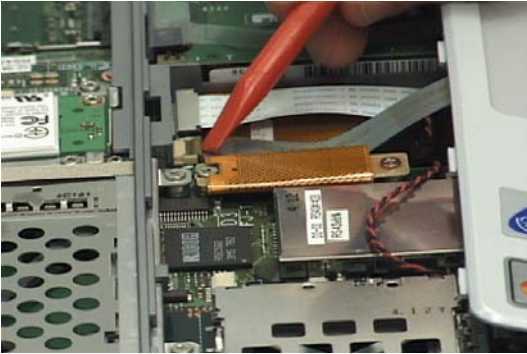
12. Turn the unit up on its front and remove 2 screws from the rear of the case.



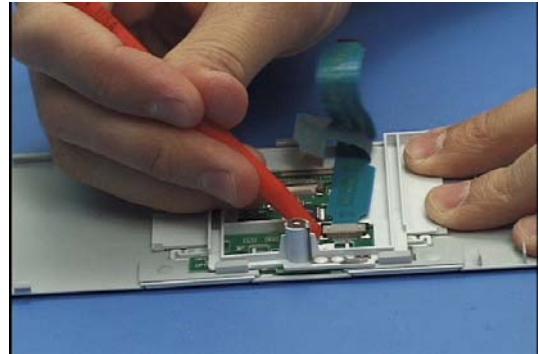
13. Lift off the display and set it aside.



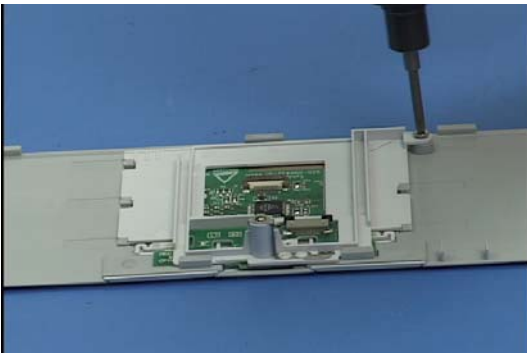
14. Use the plastic screwdriver to pry off the palm rest



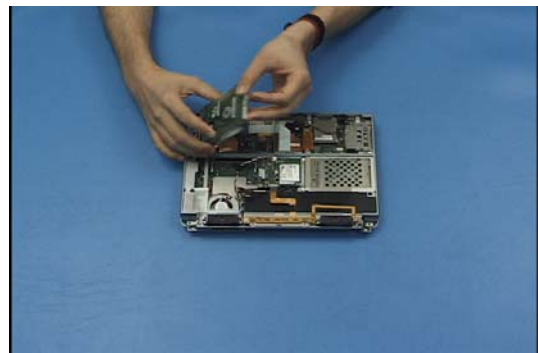
15. Disconnect the GlidePoint cable.



16. Turn the palm rest over and disconnect and remove the GlidePoint cable.



17. Remove 1 screw from the GlidePoint bracket, lift it out and lift out the GlidePoint sensor and button board.



18. Lift up the Hard Disk Drive, disconnect its cable and remove it.



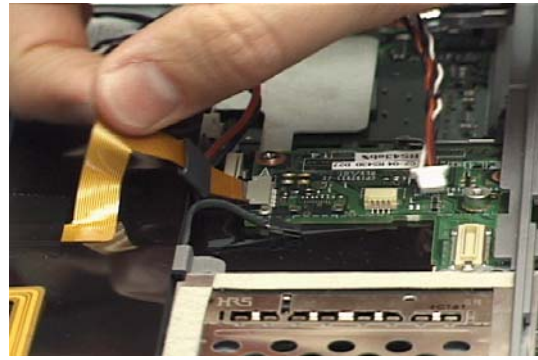
19. Disconnect the key lock LED cable, remove the tape from it and remove the LED board.



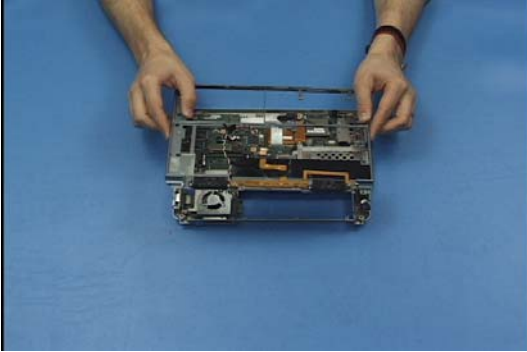
20. Remove 3 screws from the modem, disconnect the RJ11 cable from it and remove it.



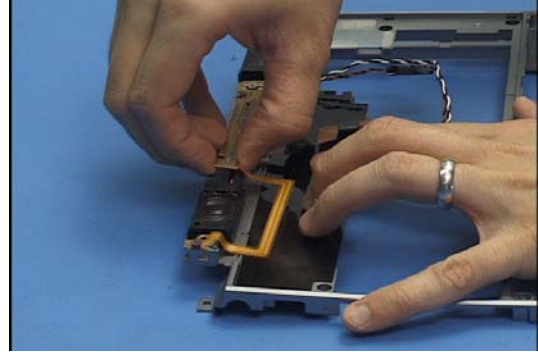
21. Remove 13 screws from the upper cover.



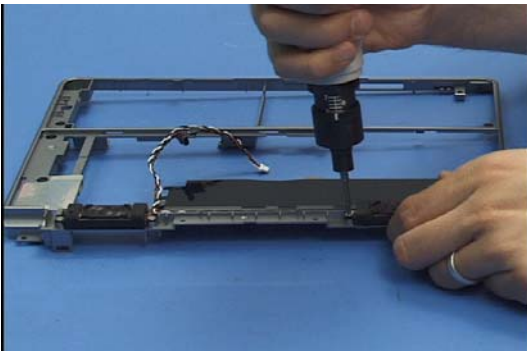
22. Disconnect the status LED cable, remove the screw from underneath.



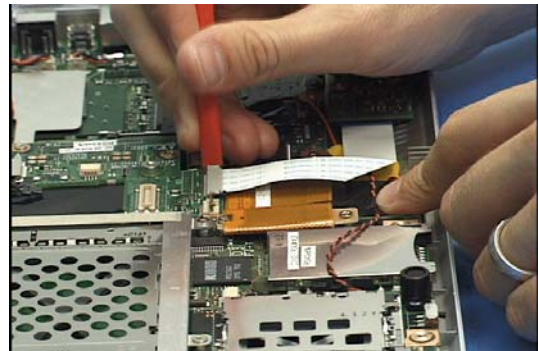
23. Lift off the top cover.



24. Remove 1 screw from the hinge switch, remove the tape from the status LED cable and lift them out.



25. Remove 1 screw from the left speaker and 2 from right and lift both out.



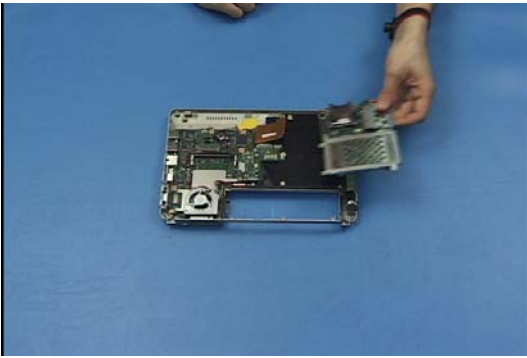
26. Disconnect the audio board's cable from the system board.



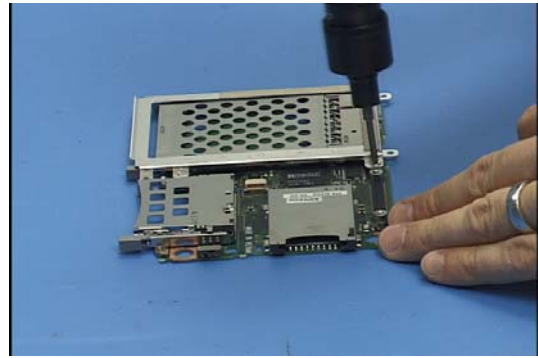
27. Remove 2 screws from the audio board, un-tape the microphone cable and remove them both.



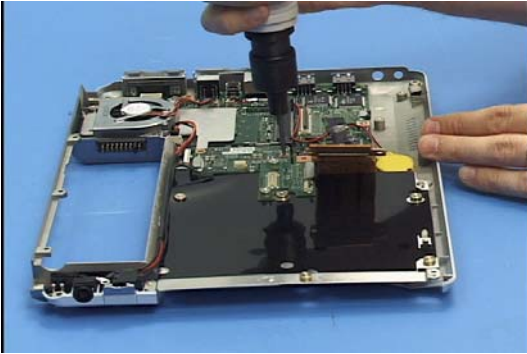
28. Remove 2 screws from the Expansion Card Daughterboard's cable and disconnect it.



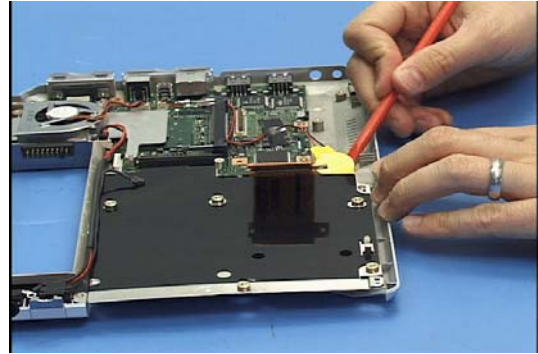
29. Lift out the Expansion Card Daughterboard.



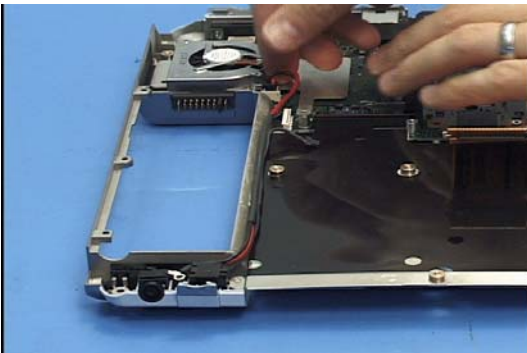
30. Extract 2 screws from the PCMCIA bracket and remove it.



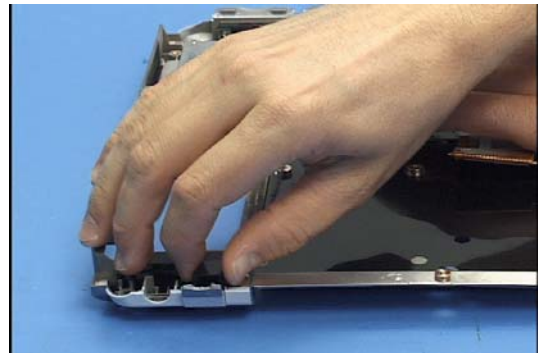
31. Remove 2 screws from the Bay Daughterboard and pull it up to disconnect it from the system board.



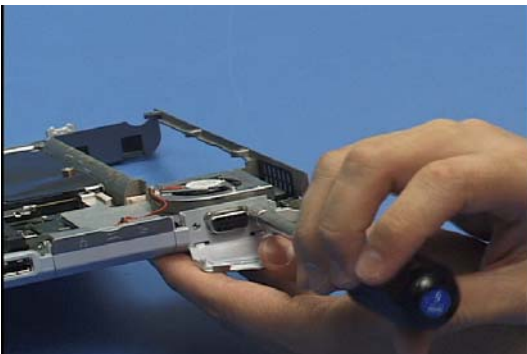
32. Pry up the BIOS battery to remove it from the case and disconnect its cable.



33. Disconnect the DC power cable from the system board and lift it and the connector out of the case.



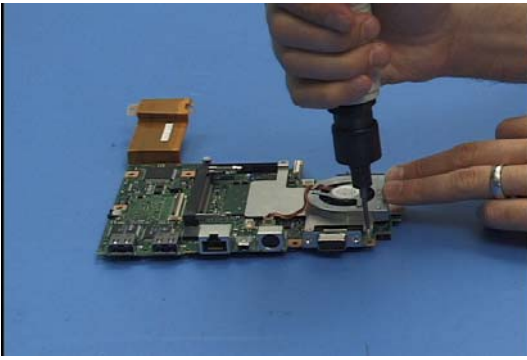
34. Lift out the RJ11 connector and cable.



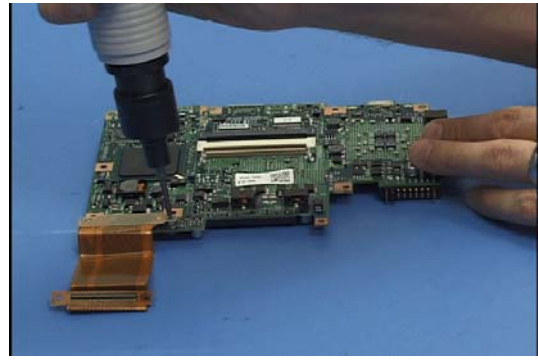
35. Remove 2 hex screws from the external VGA connector.



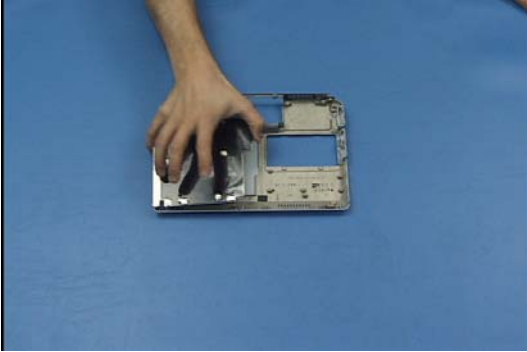
36. Remove 4 screws from the system board and lift it out.



37. Remove 2 screws from the CPU fan/heat sink, disconnect its cable and remove it.



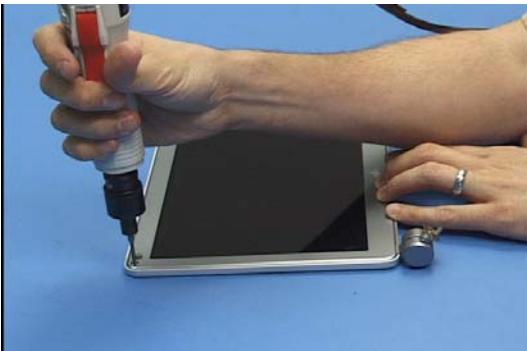
38. Turn the system board over, remove 2 screws from the Expansion Card Daughterboard cable and remove it.



39. Remove 1 screw from the Bay shield and remove it.



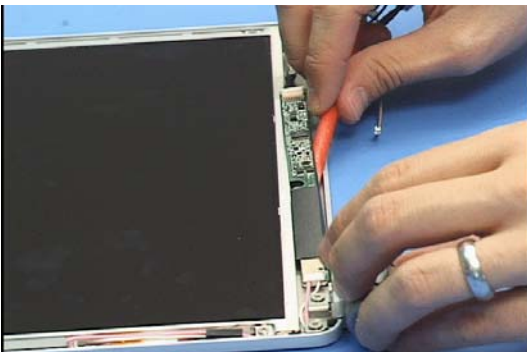
40. Stand the display on its top and remove 2 screws from the bottom.



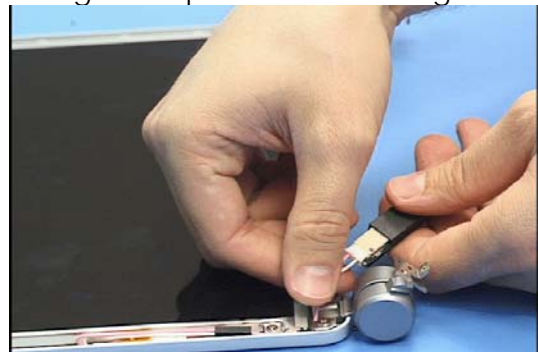
41. Remove 2 screw covers from the front of the Display and the 2 screws underneath.



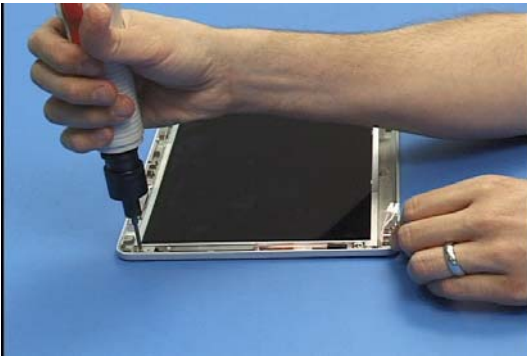
42. Pry around the perimeter of cover to remove it. Be careful of tape holding the cover to the LCD along the top and bottom edges.



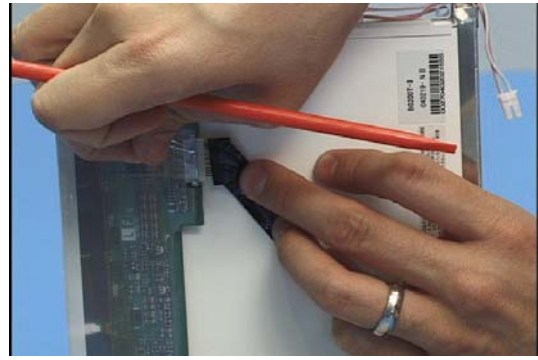
43. Pry up the inverter with the plastic screwdriver.



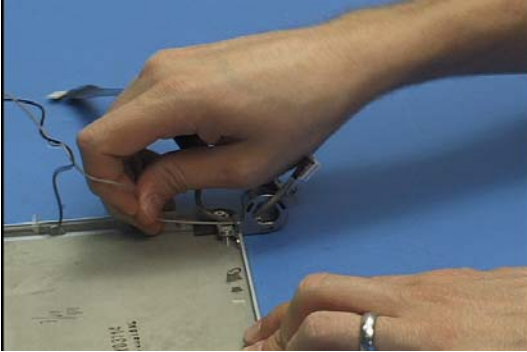
44. Disconnect the power cable and backlight cable from the inverter.



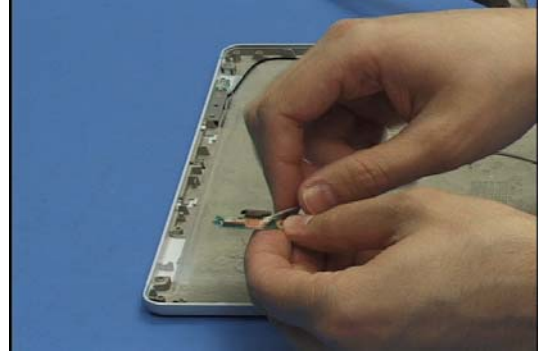
45. Remove 4 screws from the LCD and tilt it up.



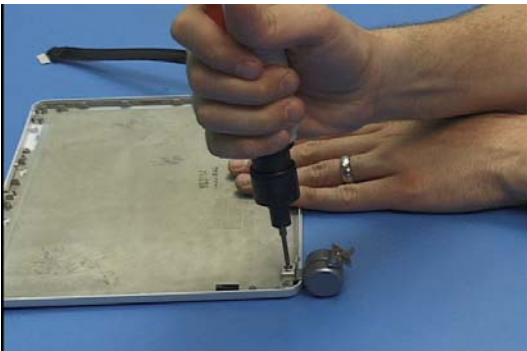
46. Remove the tape from cable and disconnect it.



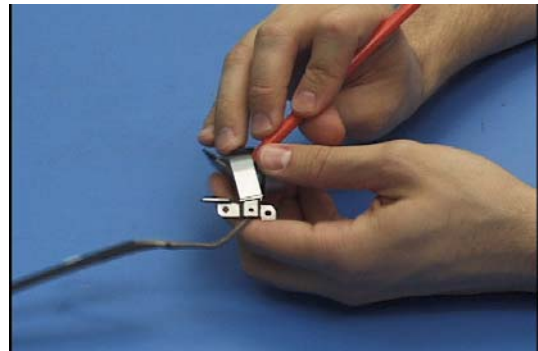
47. Route the antenna cables out of the hinge cover.



48. Remove one screw from each of the 2 antennas, remove them, and disconnect their cables.



49. Remove 2 screws from each of the 2 hinges and lift them out.



50. Pry the hinge cover off of the right hinge with the plastic screwdriver and remove the Display cable from it.